

# HAMILTON'S NEW RUBBISH AND RECYCLING SERVICE

WE'RE HITTING WASTE WHERE IT HURTS

KICK-OFF

JULY  
2020

## RED RUBBISH WHEELIE BIN

Fortnightly collection  
alternating with recycling.  
For items that cannot be  
reused, recycled  
or donated.

## YELLOW RECYCLING WHEELIE BIN

Fortnightly collection  
alternating with rubbish.  
For plastics 1-7, tins,  
cans, paper and  
cardboard.

## GLASS CRATE

Fortnightly collection  
with yellow recycling  
bin and food  
scraps bin.  
For glass bottles  
and jars.

## FOOD SCRAPS BIN

Weekly collection.  
For fruit, vegetables,  
cooked food,  
meat, fish, coffee  
grounds, etc.

NEW BIN  
DELIVERY  
FROM  
APRIL  
2020

Hamilton is wheeling out a new kerbside rubbish  
and recycling service from July 2020.

Information booklets and collection calendars for each property  
will be delivered with the bins from April 2020.

**FIGHT THE  
LANDFILL**.CO  
NZ  
PATUA TE RUAPARA



**Hamilton  
City Council**  
Te kaunihera o Kirikiriroa

# FAQs

## WHY IS HAMILTON'S KERBSIDE SERVICE CHANGING?

Following a city-wide community consultation, Hamilton City Council is launching an improved kerbside service from July 2020 to increase recycling options and divert more waste from landfill.

## WILL OUR RECYCLING GET RECYCLED?

Glass, aluminium, tin, paper and cardboard will all be recycled in New Zealand. The food scraps will be taken to a composting facility in Hampton Downs.

Recycling plastics onshore is an issue faced by all councils nationally. The Government is investing heavily towards building the infrastructure to recycle plastics onshore. The Council is working alongside our new contractor EnviroWaste and other partner organisations to explore new recycling schemes that turn plastic waste into reuseable products.

## WILL THERE BE SUPPORT FOR RESIDENTS WITH IMPAIRMENTS?

The Council will offer an assisted collection service to eligible residents. This will involve the rubbish collector coming onto the property, moving the bins and crate to the truck for emptying, and returning them to the property. Residents will need to complete an application form, attaching supporting medical documentation.

## WHEN WILL I RECEIVE THE NEW BINS?

The three new bins will be delivered to residential properties across the city in a staggered drop-off, suburb by suburb, from April 2020. Information booklets and collection calendars for each property will be delivered with the bins. Please keep using your black rubbish bags and crates until the new kerbside collection service starts in July 2020.

## WHERE WILL I STORE THE BINS?

Placed side by side, all four bins only take up around 2m in length. They're weather and animal proof, so they can be stored outside or inside - by or in the garage or shed, by the back door, or at the end of the driveway. More storage suggestions are available on [fightthelandfill.co.nz](http://fightthelandfill.co.nz)

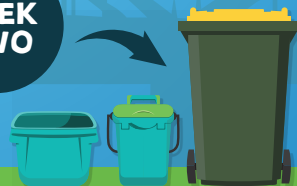
## HOW WILL WE FIT FOUR BINS ON THE KERB ON COLLECTION DAY?

You will never have to put all four bins out at once, for example:

WEEK ONE



WEEK TWO



## FOR MORE INFORMATION

 [fightthelandfill.co.nz](http://fightthelandfill.co.nz)

 07 838 6699  [info@hcc.govt.nz](mailto:info@hcc.govt.nz)

